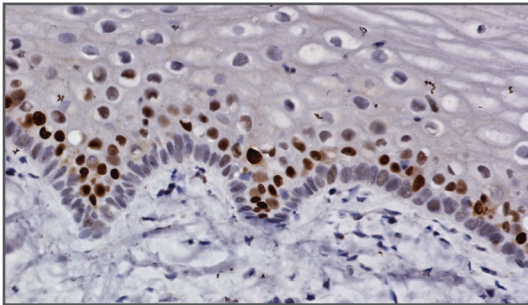




Women's Health

ProEx™ C Predicts Progression to Cervical Cancer



ProExC expression in basal portion of benign ectocervix.

Test Code

I PROEXC

I PROEXC TC (technical component only)

Specimen Requirements

Formalin fixed tissue or formalin fixed paraffin embedded tissue preferred.

Storage and Handling

Ship at ambient temperature

Specimen Stability

Indefinitely at room temperature

CPT Code

88342 x1

Turnaround Time

3 days

For more information about ProExC, contact your local representative or call a client service specialist at **800.932.2943**.

Most cancers, including cervical cancer, arise from the failure to correct DNA mistakes at cell cycle proofreading checkpoints. ProEx C detects aberrant S-phase induction, which occurs when there is a malfunction at the G1/S-phase cell cycle checkpoint resulting in premature and prolonged entry into S-phase.

ProEx C is a cocktail of monoclonal antibodies that target the minichromosome maintenance (MCM) and topoisomerase II alpha (TOP2A) proteins, which play an important regulatory role in eukaryotic DNA replication. For example, the HPV oncoproteins, E6 and E7, cause bypassing of critical cell cycle checkpoints that results in a prolonged and aberrant S-phase cycle.

Advantages of ProEx C

Used in conjunction with cervical biopsy evaluation

Indicates status of host cell transformation to disease in detection of CIN2/3

ProEx C provides additional risk indicators for progression to cervical cancer

Available as technical only or with MPLN providing interpretation

StrataFLEX™

ProEx C is a component of StrataFLEX, and innovative health management strategy for cervical cancer. StrataFLEX provides patient-specific reflex testing options to meet diagnostic challenges in a timely, cost effective manner.

About MPLN

Since 1989, Molecular Pathology Laboratory Network, Inc. (MPLN) has been making a difference in patient care by delivering the best technologies and services in laboratory medicine.

Headquartered in Maryville, Tennessee, MPLN is a fully-licensed laboratory, certified by the CLIA, accredited by the CAP and licensed in the states of Tennessee, Florida, New York and Maryland.

References

1. Freeman, N. et al. (1999). Minichromosome maintenance proteins as biologic markers of dysplasia and malignancy. *Clin Can Res* 5: 2121-2132.
2. Wright et al. (2004) HPV Testing as adjunct to cytology. *Obstet Gynecol* 103: 304-309.
3. Hewei Li et al. (2005). Topoisomerase II alpha as a specific marker for the detection of CIN2+ cervical disease in histology and cytology specimens. *ASC Poster* 57.
4. Meyer J et al. (2005). Immunocytochemical detection of MCM2 and TOP2A as diagnostic indicators of high-grade cervical dysplasia. *ASC Poster* 59.
5. Badr et. al. BD ProExC: A Sensitive and Specific Marker of HPV-associated Squamous Lesions of the Cervix. *Am J Surg Pathol*, Vol 32 (6), June 2008, pp. 899-906

Trademarks:

StrataFLEX is a trademark of Molecular Pathology Laboratory Network, Inc.

ProExC is a trademark of Becton, Dickinson and Company.