



Experience.

# MPLN

## ANATOMIC PATHOLOGY

Molecular Pathology Laboratory Network, Inc. (MPLN) has been on the forefront of laboratory medicine since its inception. MPLN has a full complement of Anatomic Pathology services including surgical pathology, immunohistochemistry (IHC) and hematopathology testing with consistent quality and rapid turnaround time. Experience. MPLN.

### Full Line of Services

- Surgical pathology with expertise in breast, hematologic, and general surgical pathology
- Hematopathology with the full complement of diagnostic support testing
- Extensive IHC menu with both interpretation and technical only available with remote image viewing - whole slide imaging
- Robust digital pathology services
- In-house companion diagnostics
- Highly experienced and competent pathologists who provide personalized consultation
- Full access to pathologists

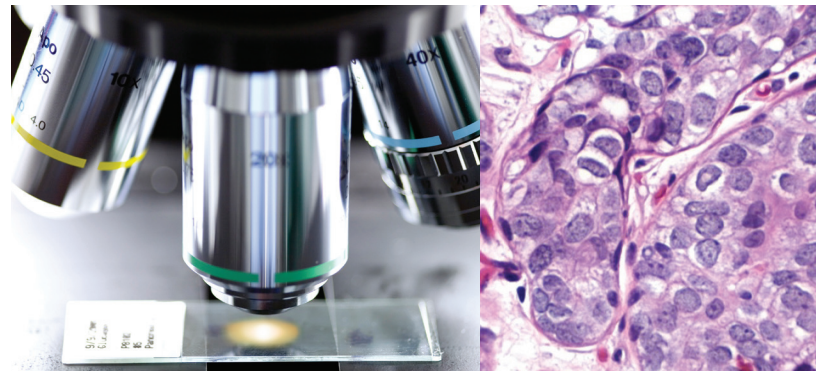
### Comprehensive

The management and care of a patient is greatly enhanced by our use of advanced technologies and consultative services. MPLN offers a comprehensive and integrative complement of services:

- Full hematopathology work-up
- Breast tumor diagnosis with prognostic testing for treatment decisions
- Consultative services for both hematopathology and surgical pathology
- Comprehensive test menu all under one roof including addendum, IHC, FISH and MDX

### Case Summary Report

MPLN's integrated report follows the completion of all testing on bone marrow samples.



- A single-page case summary of all findings provided to the ordering clinician in an easy-to-read format
- Correlation of multidisciplinary testing and previous testing are included, following a patient over time
- Cases reviewed post analytically for concordance

### Strategic Laboratory Testing

Our in-house multidisciplinary approach utilizes evidence-based medicine to maximize diagnostic information and provide a complete diagnostic picture without performing unnecessary tests.

### One Source

Coordinating laboratory tests and results within one facility, MPLN provides a single source for anatomic pathology, FISH, flow cytometry, cytogenetics, and molecular testing.

Using one source for your laboratory testing provides simpler logistics for ordering, molecular reflex testing, reporting, billing, and patient management.

### Contact Us

For more information, visit us online at [www.MPLNet.com](http://www.MPLNet.com) or contact us at **800.932.2943**.



Experience.

**MPLN**

ANATOMIC PATHOLOGY

Test Name	Test Code	Specimen Requirements	Storage & Stability	TAT
<b>Primary Surgical Pathology Interpretation</b> Microscopic evaluation; additional stains or studies as required (special stains, immunohistochemistry, gene rearrangement, etc.)	SPP	Surgical samples received in 10% neutral buffered formalin  Previously prepared pathology materials (H&E slides, formalin fixed paraffin embedded blocks or smears)  Reports, history and differential diagnosis required	Prepared pathology materials, stable indefinitely at 18-25°C	2-4 days
<b>Pathology Consultation</b>	Surgical Pathology Consultation (SPC)	Previously prepared pathology materials (H&E slides, formalin fixed paraffin embedded blocks or smears)  Reports, history and differential diagnosis require	Prepared pathology materials, stable indefinitely at 18-25°C	2-4 days
<b>Bone Marrow Pathology Evaluation</b>	BMPE	1.0 cm bone marrow core biopsy in formalin or B Plus fixative  Aspirate (clot) in formalin or B Plus fixative  Aspirate in sodium heparin for flow cytometry and cytogenetics; Aspirate in EDTA for molecular studies  4-6 air-dried marrow aspirate slides containing spicules  1 peripheral blood smear with CBC report	Bone marrow core biopsy, aspirate clot, marrow or blood smears, stable indefinitely at 18-25°C  Marrow aspirate and EDTA samples, 48 hours at 18-25°C	2-4 days
<b>Immunohistochemistry Antibodies</b> (see markers below chart)	Various – refer to catalogue	Bone Marrow (see Bone Marrow Evaluation)  Surgical samples received in 10% neutral buffered formalin  Formalin fixed paraffin embedded tissue  Previously prepared pathology materials (blocks, slides, smears or other samples)  Reports, history and differential diagnosis required	Prepared pathology materials, stable indefinitely at 18-25°C	Less than 2 days
<b>In situ Hybridization Probes</b>	Kappa (I KAP ISH), Lambda (I LAM ISH), Epstein Barr Virus (I EBER ISH)	Bone Marrow (see Bone Marrow Evaluation)  Surgical samples received in 10% neutral buffered formalin  Formalin fixed paraffin embedded tissue  Previously prepared pathology materials (blocks, slides, smears or other samples)  Reports, history and differential diagnosis required	Prepared pathology materials, stable indefinitely at 18-25°C	Less than 2 days

**Immunohistochemistry Antibodies, Markers for:**

- Breast & Prognostic Panel
- Carcinoma/Mesothelioma
- CNS
- Cervical/Gynecological
- Hematopoietic
- Infectious Disease
- Kerrated/Epithelial
- Melanocytic
- Myoepithelial/ Basal/ Basement Membrane
- Neuroendocrine
- Prognostic
- Proliferation
- Prostate
- Sarcoma
- Vascular
- Neural
- Fibrohistiocytic, Muscle, GIST Stromal
- Tumor Markers

(Rev 9/2013)